

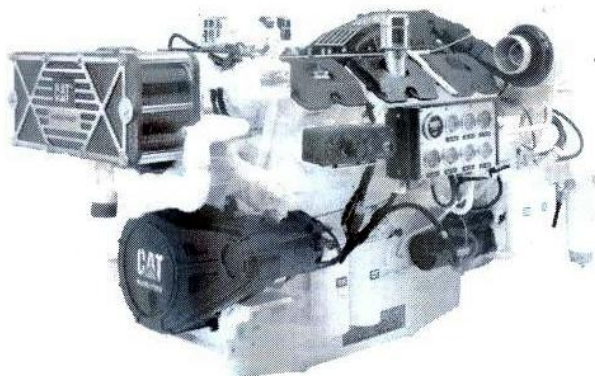
**3412E****1420 mhp (1400
bhp) 1044 bkW****MARINE PROPULSION**

Image shown may not reflect
actual Engine

SPECIFICATIONS**V-12, 4-Stroke-Cycle-Diesel**

Emissions.....	IMO
Displacement.....	27.03 L (1,649.47 in ³)
Rated Engine Speed.....	2300
Bore.....	137.2 mm (5.4 in)
Stroke.....	152.4 mm (6.0 in)
Aspiration.....	Turbocharged-Aftercooled
Governor.....	Electronic
Cooling System.....	Heat Exchanger
Weight, Net Dry (approx.).....	2,233 kg (4,923 lb)
Refill Capacity	
Cooling System.....	72.5 L (19.2 gal)
Lube Oil System.....	85.0 L (22.5 gal)
Oil Change Interval.....	200 hrs
Caterpillar Diesel Engine Oil 10W30 or 15W40	
Shallow Sump Oil Pan	
Rotation (from flywheel end).....	Counterclockwise
Flywheel and Flywheel Housing.....	SAE No. 1
Flywheel Teeth.....	113

STANDARD ENGINE EQUIPMENT**Air Inlet System**

Corrosion resistant aftercooler core, light duty air cleaner (open system) with service indicator (shipped loose)

Cooling System

Gear-driven centrifugal auxiliary sea water pump, gear-driven centrifugal jacket water pump, titanium plate heat exchanger and expansion tank, coolant recovery system, engine oil cooler, thermostats and housing, block heaters

Exhaust System

Watercooled exhaust manifold and turbocharger

Fuel System

Hydraulic Electronic Unit Injection (HEUI), fuel filter - RH or LH service, fuel transfer pump, fuel priming pump, flexible lines

Instrumentation

Instrument panel with electronic service meter, start/stop switch, emergency stop button, maintenance due lamp, diagnostic lamp, warning lamp, 15A breakers, and starter motor magnetic switch; RH or LH 5 hole instrument panel with oil pressure, water temperature, and fuel pressure gauges

Lube System

Crankcase breather, oil filter - RH or LH service, oil level gauge - RH or LH service, oil filler in valve cover, shallow center sump oil pan

Mounting System

Front support - adjustable

Protection System

Electronic - 24 volt only

General

Vibration damper and guard, Caterpillar yellow paint, lifting eyes, variable engine wiring, customer wiring connector and service tool connector

ISO Certification

Factory-designed systems built at Caterpillar
ISO 9001:2000 certified facilities

